



**43 Palm House  
London, SE11 5AH  
£2,800 Per Month**

A two bedroom / two bathroom apartment located on the top floor of this modern development, Palm House. The apartment benefits from two good size bedrooms, Juliette balcony in the reception room, fully fitted kitchen, extra storage area.

Master bedroom with private en-suite, balcony overlooking the courtyard, built-in wardrobe, Second bedroom with lovely views towards the Shard.

Located only a short distance to Westminster and the peaceful green stretches of Kennington, Palm House is ideally situated and is only moments away from Albert Embankment and the River Thames. With the property only 8 minutes' walk from Vauxhall Underground and Train Station, transport links are superb.

Council tax - Lambeth council, Band E (£199 pcm).





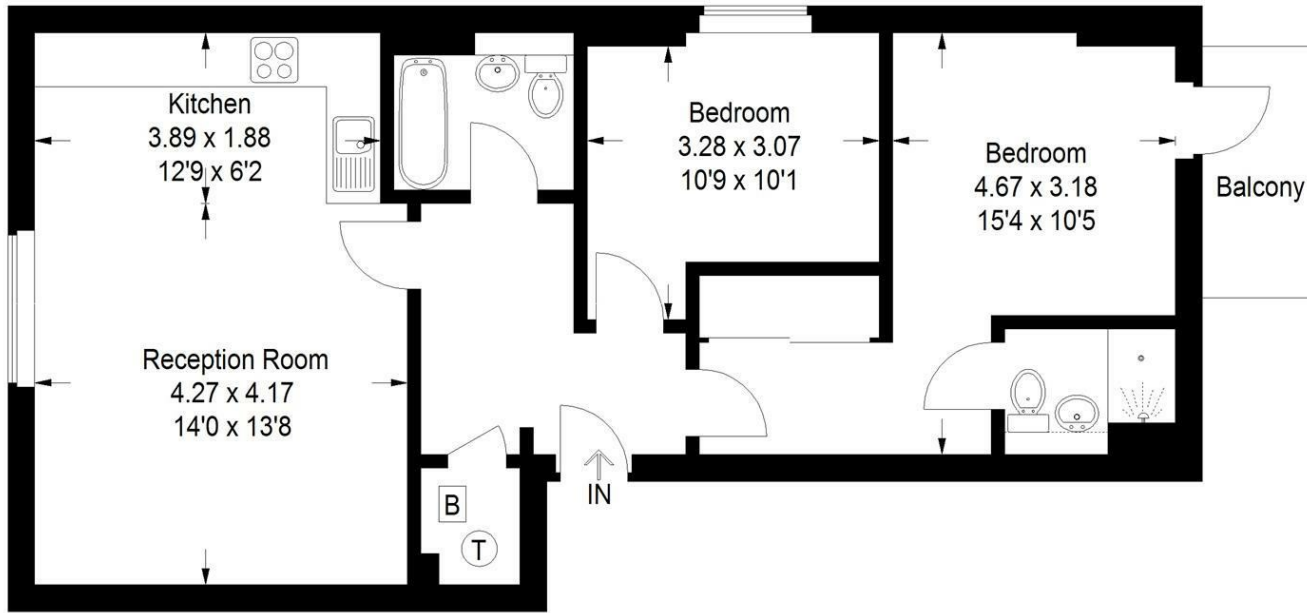






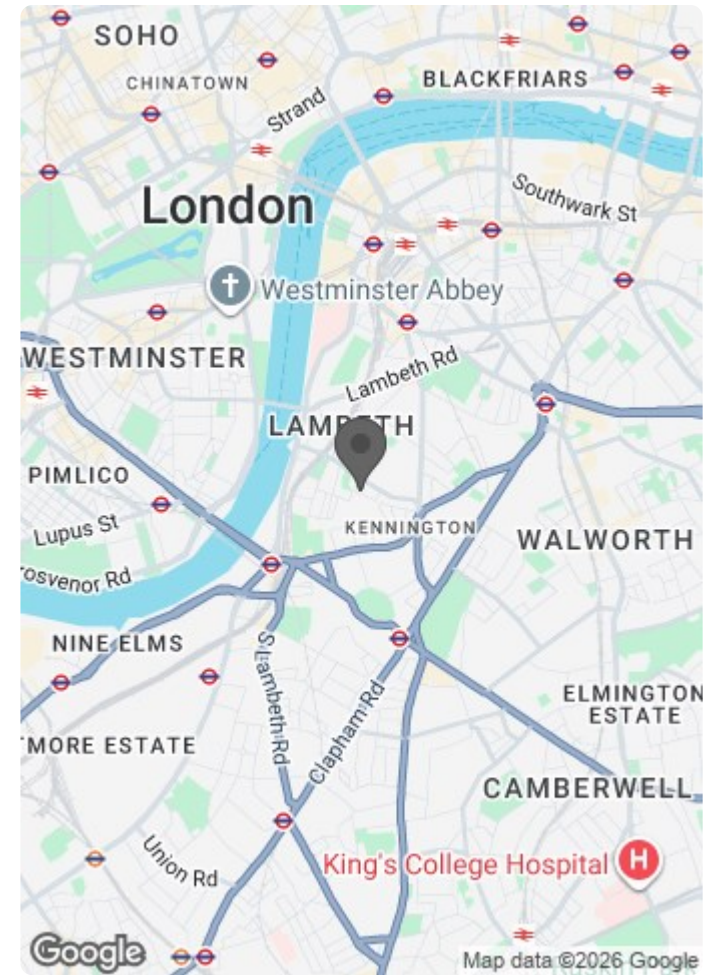
# Palm House

Approximate Gross Internal Area  
68.8 sq m / 741 sq ft



## Fifth Floor

Illustration for identification purposes only, measurements are approximate, not to scale.  
FloorplansUsketch.com ©



Energy Efficiency Rating		Current	Potential
Very energy efficient - lower running costs			
(92 plus) A			
(81-91) B			
(69-80) C			
(55-68) D			
(39-54) E			
(21-38) F			
(1-20) G			
Not energy efficient - higher running costs			
<b>England &amp; Wales</b>		80	80
	EU Directive 2002/91/EC		

Environmental Impact (CO <sub>2</sub> ) Rating		Current	Potential
Very environmentally friendly - lower CO <sub>2</sub> emissions			
(92 plus) A			
(81-91) B			
(69-80) C			
(55-68) D			
(39-54) E			
(21-38) F			
(1-20) G			
Not environmentally friendly - higher CO <sub>2</sub> emissions			
<b>England &amp; Wales</b>			
	EU Directive 2002/91/EC		